

# INSTALL INSTRUCTIONS FOR 75-5133

**PART#: 75-5133 / 75-5133D**

## Vehicle Application

**YEAR:** 2019-2020

**MAKE:** Ram

**MODEL:**2500/3500

**ENGINE:** Hemi V8-6.4L Gas

**Note:** This intake kit may not fit with the following Aftermarket Parts installed:

- Body Lift or Lowering Kit
- Custom Hood
- Intercooler or Turbo upgrades

## Tools Required

- Flathead screwdriver
- 10mm, 11mm, Wrench or Socket and Driver
- 5/16" Nut Driver or socket (possible extension needed)
- Silicone Spray Lubricant (Optional)
- Step Stool (Optional)

**Note:** Approximate Install Time: 1 Hr 00 Mins.

## S&B Filter Maintenance

KF-1078 Cotton Cleanable : If the enclosed filter is RED, it came pre-oiled from the factory. Click here for exact oil amount required for cleaning.

KF-1078D Dry Extendable : If the enclosed filters is WHITE, it is a disposable filter and should be discarded once it reaches capacity.

This filter does not require oil

## CARB Status - EXEMPT

The product has been submitted to the Air Resources Board for approval shortly.

Not legal for use in CA or other states adopting CA emissions standards

## Before You Start

- Please read the entire product guide before proceeding.
- Ensure all parts are present.
- If you are missing any of the components, call our customer support at (909) 947-0015.
- Do not work on your vehicle while the engine is hot.
- Make sure the engine is turned off and the vehicle is in Park or the Parking Brake is set.

## Related Products

- Cotton Cleanable Filter (KF-1078)
- Dry Extendable Filter (KF-1078D)
- Cleaning & Oiling Kit (88-0008) Filter Wrap (WF-1078)

## **Performance Testing**

- Engage parking brake and start your engine. Listen for abnormal noises. If an air leak is detected, re-inspect hoses and connections as they may need to be repositioned and tightened.
- S&B FILTERS recommends that you keep your OE intake system in the event it is required in the future.
- In order to maintain your warranty, all connections and components must be checked periodically for alignment and for proper tension on all connections. Failure to do so may void your warranty.
- Use only S&B FILTERS cleaning and oil products to service your filter. Using any other brand oil and or cleaners on your S&B air filter may void your warranty.

## **Warning!**

If your vehicle has a Vehicle Emission Control Information decal affixed to the factory airbox, a new replacement label must be obtained and installed in a readily visible position in the engine compartment in order to remain CARB compliant. Failure to do so will prevent the vehicle from passing a smog check. Replacement labels can be ordered from your local dealership. Regulations state that the VECI label shall not be affixed to any equipment which is easily detached from the vehicle. Label placement, under the hood on a painted surface is recommended.

# EXPLODED VIEW



## PARTS LIST

<b>ITEM</b>	<b>QTY.</b>	<b>DESCRIPTION</b>	<b>PART NUMBER</b>
A	1	Polycarbonate Lid	Ai2310-00
B	1	Snap-in lid seal	Ai2312C-00
C	1	Kit Filter	KF-1078 / KF-1078D
D	2	1/4"-20 x 3/4" Hex Head Screws	Ai1068-00
E	2	1/4" Flat Washers	Ai1073-00
F	1	Air Box Plug	Ai1673C-00
G	1	Bracket	Ai1677-01
H	3	Rubber Grommets	Ai2375-00
I	1	Scoop Seal	Ai2311-00
J	1	#88 Hoseclamp	AG1011-00
K	1	Air Box	AL1358B-00
L	1	Silicone Tube Seal	Ai1717C-01
M	1	Tube	AL1358-00
N	1	IAT Grommet	Ai1948C-00
O	1	#60 Hose Clamp	AG1008-00
P	1	Step Coupler	Ai1581C-00
Q	1	#56 Hose Clamp	AG1019-00

# INSTALLATION STEPS

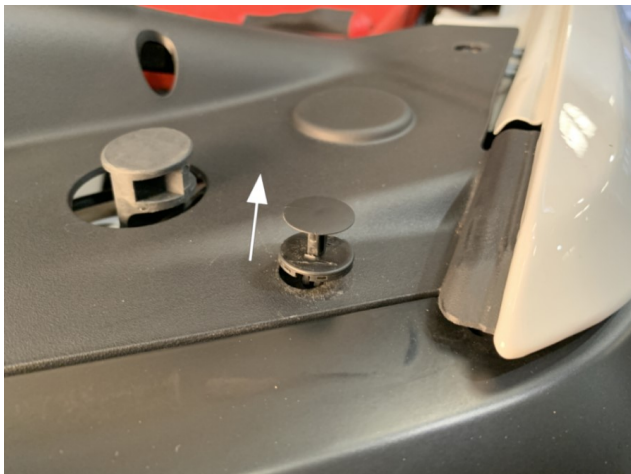
## NOTE ABOUT DISCONNECTING THE BATTERY

Trim models with large infotainment screens and backup cameras have been known to display a blue screen after the batteries are reconnected. This is attributed to the boot sequence of the computer systems in the vehicle. OEM reports that it is a known issue when rebooting the vehicle computer systems due to a battery reset. We suggest leaving the vehicle with the batteries connected overnight or a minimum of 10 hours for the systems to resume in full working order.



## STEP 2

Remove the panel push-in rivets attaching the air scoop cover with a flathead screwdriver by prying under the locating pins. Note: Collect these to be used later for re-installation. There are 12 in total. Please be sure to remove the two in the rear of the scoop cover connected to the factory scoop. A step stool may be required to reach.



## STEP 1

With the ignition switched off and the parking brake set, open the hood and disconnect the negative battery cable on the driver's side of the engine.

**IMPORTANT: Failure to disconnect the battery for a minimum of 2 hours may cause the Check Engine Light to illuminate upon completion of the installation or subsequent operation. DO NOT SKIP THIS STEP!**



## STEP 3

Lift up the factory air scoop cover and remove it from the vehicle. Set it to the side, to be re-installed later.



#### STEP 4

Remove the 2 bolts attaching the factory air scoop to the vehicle using a 10mm socket and driver. Collect these bolts and set them to the side, to be re-installed later.



#### STEP 5

Uninstall the factory engine cover by lifting up and pulling towards the front of the vehicle.



#### STEP 6

Disconnect the crankcase vent tube by pulling the hose firmly away from the factory air tube.



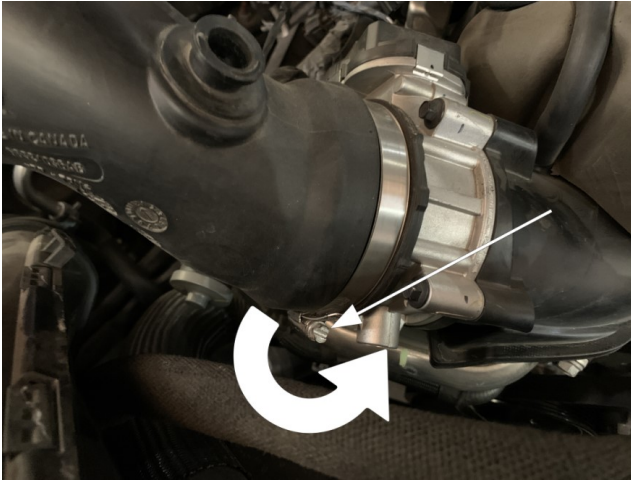
#### STEP 7

Remove the IAT sensor from the factory tube by twisting counterclockwise then pulling out of the factory tube, if it seized spray silicone lubricant to aid in its release



### STEP 8

Using a 5/16" driver or socket, loosen the hose clamp on the factory tube connected at the throttle body.



### STEP 9

Using a panel popper remove the panel rivets securing the electrical harness connected to the factory airbox and air scoop locations



### STEP 10

Firmly Lift up and remove the entire factory intake assembly from the grommets of the vehicle. Set the assembly to the side



### STEP 11

Install the silicone scoop seal (I) onto the S&B airbox (K)



## STEP 12

Assemble the Silicone tube seal (L) onto the S&B Airbox (K)



## STEP 13

Push the S&B Tube (M) through the Silicone tube seal (L)



## STEP 14

Assemble the IAT Grommet (N) onto the S&B Tube (M)



## STEP 15

Push the S&B Silicone Coupler (P) onto the S&B tube (X) and secure with #60 Hose Clamp (O) using a 5/16" driver or socket. You may also place the #56 hose clamp (Q) over the opposite coupler end at this time. Leave the #56 hose clamp loose at this time





### STEP 16

Attach the mounting bracket (G) to S&B airbox (K) by securing the 1/4"-20 screws (D) and 1/4" washers (E) first by hand tightening



### STEP 16 A

Proceed to tighten firmly using an 11mm socket or nut driver



### STEP 17

Decide to install the optional S&B silicone plug (F) onto the S&B Airbox (K) or leave out.



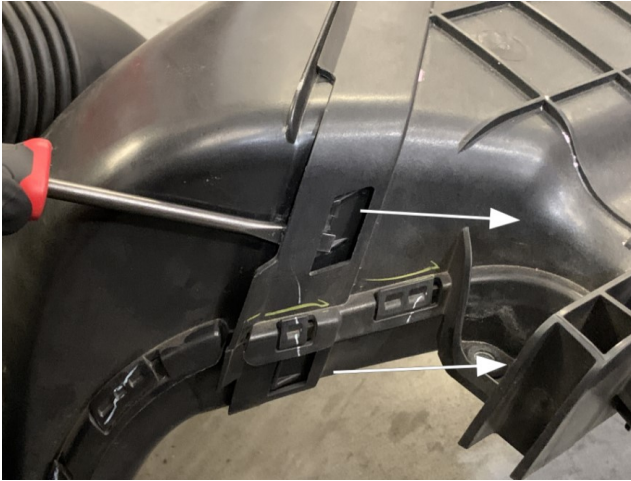
### STEP 18

Install the provided replacement S&B mounting grommets (H) onto the bottom of the S&B Airbox (K) and mounting bracket (G)



## STEP 19

Remove the top portion of the factory scoop by prying the tabs to the sides of the scoop from the factory intake assembly using a flathead screwdriver.



## STEP 20

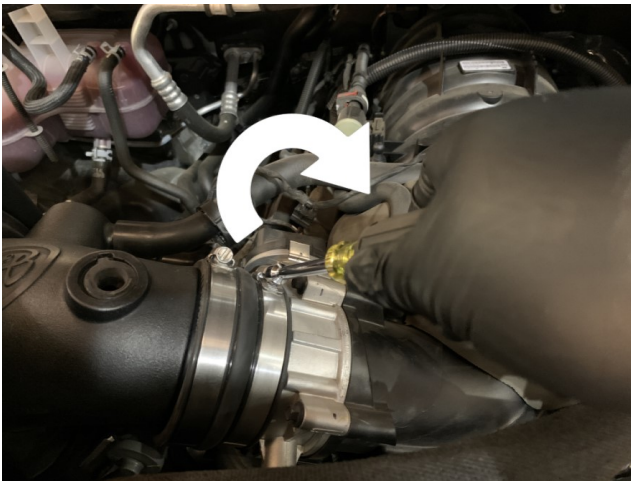
Align the factory scoop with the S&B Airbox (K). Push the factory scoop over the S&B scoop seal (I).

Drop the S&B Cold Air Intake assembly and factory scoop into the vehicle. Lining up grommets, Push in firmly onto the vehicles factory mounting locations



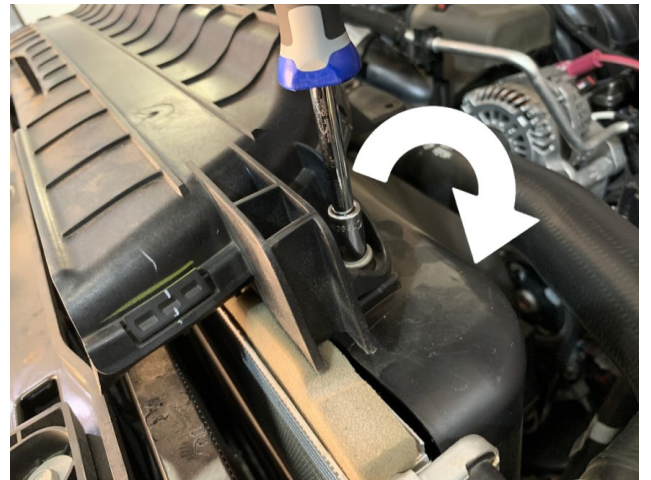
## STEP 21

Line up the silicone coupler (P) over the throttle body and push on the tube from the inside of the airbox to align the coupler over the throttle body. Tighten the #56 hose clamp (Q) using a 5/16" driver or socket onto the throttle body.



## STEP 22

Line up factory scoop into the factory position and tighten the bolts, removed in step 4, using a 10mm socket or driver



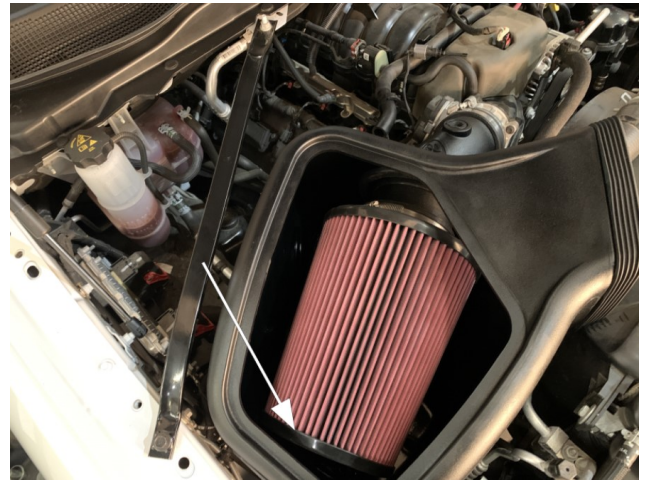
### STEP 23

Drop the Silicone S&B Air Filter (C) into the S&B Airbox (K) with the #88 hose clamp (J) attached loosely. Enter the airbox by the filter flange first, this will make it easier to align the filter flange onto the tube. Slide the lower inner filter flange lip under the tube and push in firmly over the tube.



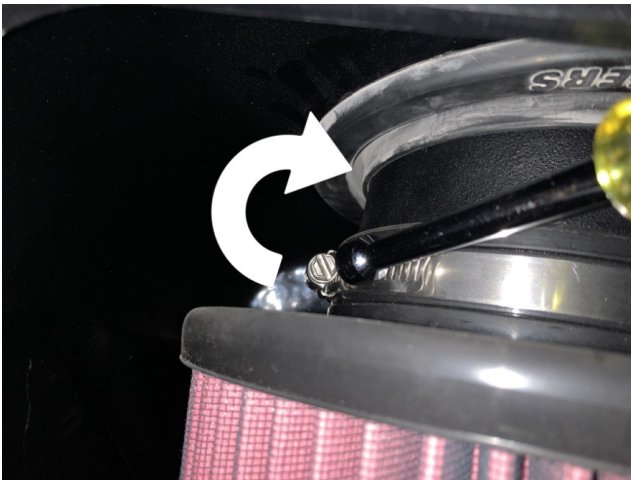
### STEP 23 A

Make sure the filter top is resting on the airbox stand-off.



### STEP 23 B

Tighten the hose clamp over the tube using a 5/16" nut driver



### STEP 24

Reconnect the crankcase vent tube by sliding over the location on the S&B tube (M) Install the hose clamp (not show) onto the CCV hose and tighten.



## STEP 25

Reconnect IAT sensor harnesses onto the S&B tube by twisting into the grommet (N)



## STEP 26

Re-attach the scoop cover using the factory plastic rivets



## STEP 27

Remove the protective covering from S&B clear lid (A), be sure to remove the covering from inside the S&B logo!



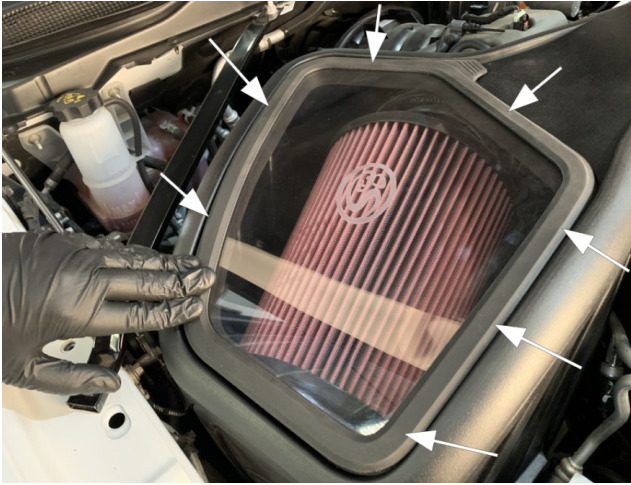
## STEP 28

Install the Silicone Snap-in Lid seal (B) onto the S&B Clear Lid (A). Pull the seal over the edges of the lid until the lid is securely completely within the silicone snap-in seal.



## STEP 29

Install the S&B Snap-in Clear Lid onto the S&B Airbox by inserting one corner or edge of the seal fully first, then work around the lid pressing on each side.



## STEP 30

Reinstall the engine cover by pushing the locating features back into position and pressing down to secure.



## STEP 31

Reconnect the negative terminals onto the battery. Inspect your installation, make sure the kit is properly positioned and all fasteners are secure. Keep all stock parts in case you would ever need to reinstall the stock intake assembly. The installation is now complete.

