

INSTALL INSTRUCTIONS FOR 75-5136

PART#: 75-5136 / 75-5136D

Vehicle Application

YEAR: 2020

MAKE: Chevrolet

MODEL: Silverado 2500/3500

ENGINE: 6.6L Duramax

This intake kit may not fit with the following aftermarket parts installed:

- Body Lift or Lowering Kit
- Custom Hood

Tools Required

- Socket Wrench
- 8mm, 10mm, 13mm Socket
- ¼" Socket Extension
- 5/16" Socket/Nut Driver
- T20 Torx
- Phillips Head Screwdriver

Note: Approximate Install Time: 30 Mins.

S&B Filter Maintenance

KF-1076 Cotton Cleanable : If the enclosed filter is RED, it came pre-oiled from the factory.

KF-1076D Dry Extendable : If the enclosed filters is WHITE, it is a disposable filter and should be discarded once it reaches capacity. This filter does not require oil.

Periodically Check the Following

- Intake Tube (T) and Filter (AB) connections and Intake Box (A) fasteners making sure they are tight.
- All electrical connections and wire harnesses moved during the installation of the intake and make sure they are secure and away from any hot or moving components.
- Check for any signs of abrasion or wear and tear on the intake tube, box, filter, and electrical harnesses moved or near the intake and repair/replace as necessary.

Before You Start

- Please read the entire product guide before proceeding.
- Ensure all parts are present.
- If you are missing any of the components, call our customer support at (909) 947-0015.
- Do not work on your vehicle while the engine is hot.
- Make sure the engine is turned off and the vehicle is in Park or the Parking Brake is set.

Performance Testing

After your installation is complete, engage the parking brake and start your engine. Listen for abnormal noises. If an air leak is detected, re-inspect hoses and connections as they may need to be repositioned and tightened.

S&B FILTERS recommends that you keep your OE intake system in the event it is required in the future.

In order to maintain your warranty, all connections and components must be checked periodically for alignment and for proper tension on all connections. Failure to do so may void your warranty.

Use only S&B FILTERS cleaning and oil products to service your engine. Do not use other brand oil and c



Air Box Plug Testing

Stock air boxes are a significant contributor to poor airflow which is why S&B designs custom air boxes with secondary and/or enlarged openings. With that said, S&B recognizes the benefits of cooler air, so we have included a plug to seal off the opening if so desired. For optimal performance, we recommend that the intake be used without the plug except in conditions of extreme heat.

Operation in Rain or Snow

If you are driving in heavy snowfall or extreme rain conditions, you should always check for accumulated snow and water on the air filter. The following is recommended after operating the vehicle up to 100 miles in heavy snowfall or extreme rain: At the earliest opportunity, open the hood and check the airbox and filter. If any snow has accumulated, make sure to remove the snow from the filter, box, and inlet. It is ok if the filter is a little wet. Wet filters will normally dry out on their own. If the filter is dripping wet, it should be replaced with another filter that is not wet. Do not reuse the dripping wet filter until it has naturally dried.

Warning!

If your vehicle has a Vehicle Emission Control Information decal affixed to the factory airbox, a new replacement label must be obtained and installed in a readily visible position in the engine compartment in order to remain CARB compliant. Failure to do so will prevent the vehicle from passing a smog check. Replacement labels can be ordered from your local dealership. Regulations state that the VECI label shall not be affixed to any equipment which is easily detached from the vehicle. Label placement, under the hood on a painted surface, is recommended

CARB Status - Pending

CARB EO # Pending

*Not Legal for use in CA and other states adopting CA emissions Standards.

Emission Standard

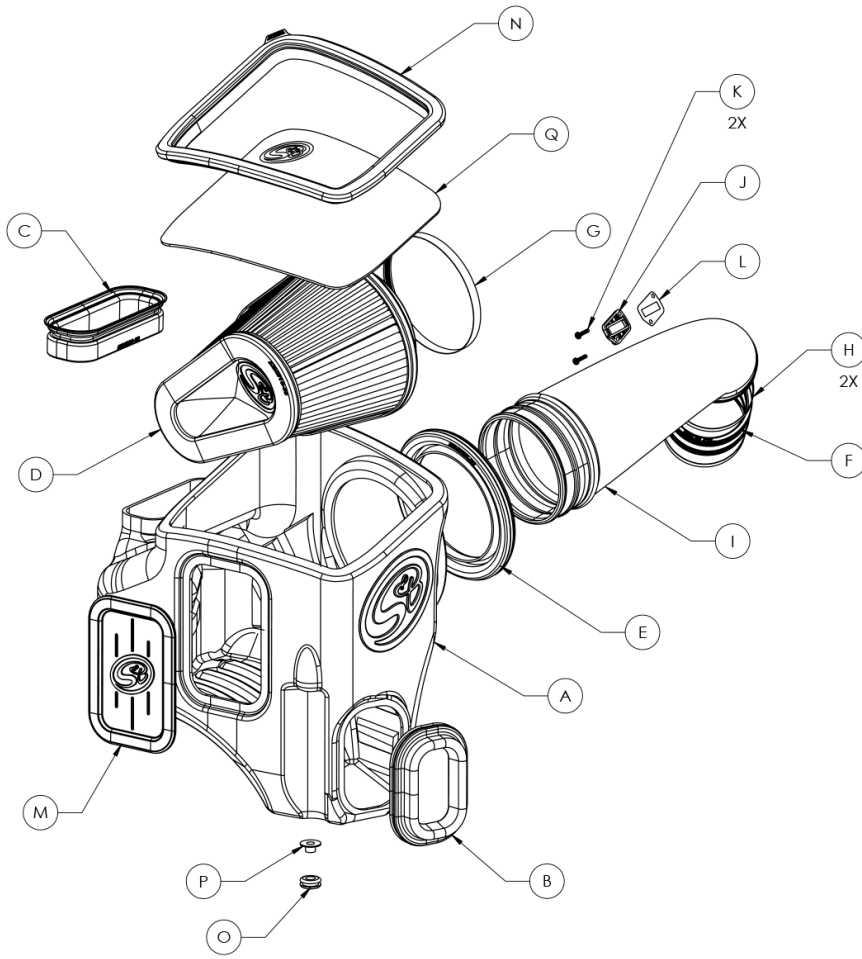
The California Air Resource Board (CARB) requires that an E.O. Identification label be applied to the vehicle in order to pass a smog check inspection when a Performance Intake Kit has been installed. You must place the E.O. Label provided on or near the intake kit after installation so that a smog check technician can easily verify the E.O. Number. Check the status of the exemption process by looking up a specific part number at www.sbfilters.com. The CARB Exemption number and/or status is listed under the Product Details section for each part number. If the status shows as "Pending," CARB has yet to issue an exemption but the product has been submitted. Products that have not been issued an E.O. number are street legal in most states, but may not be used on emission controlled vehicles in the state of California. If you purchased your kit from S&B Filters directly, we will automatically mail you your Exemption Sticker when it is issued to us. If

Related Products

- S&B Filter Maintenance: (KF-1076)
- Dry Extendable Filter (KF-1076D)
- Cleaning & Oiling Kit (88-0008)

you purchased your kit from an authorized
S&B Filters Dealer, log onto our website and
register to receive your Exemption Sticker.

PARTS LIST



ITEM NO.	PART NUMBER	DESCRIPTION	QTY.
A	AL1371B-00	Air Box	1
B	AI2468C-00	Fender Seal	1
C	AI2469C-00	Hood Scoop Seal	1
D	KF-1076	Air Filter	1
E	AI2470C-00	Tube Seal	1
F	AI1714C-00	Silicone Coupler	1
G	AG1012-00	Hose Clamp, #56	1
H	AG1018-00	Hose Clamp, #104	2
I	AL1371-00	Intake Tube	1
J	AI1822-00	MAF Adapter Pad	1
K	AI1837-00	8-32 Thread Size, 3/4" Long Screw	2
L	AI1823-00	MAF Gasket	1
M	AI2289C-00	Box Plug	1
N	AI2467C-00	Lid Seal	1
O	AI1563-00	Air Box Grommet	1
P	AI2296-00	Machined Shoulder washer	1
Q	AI2467C-00	Lid	1

INSTALLATION STEPS

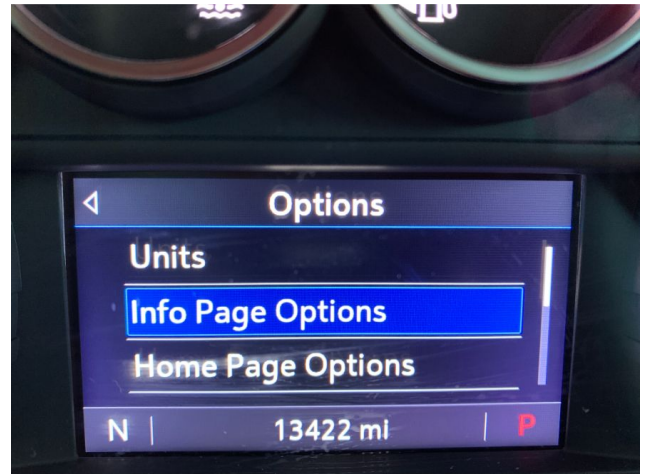
STEP 1

To prevent the following message from displaying, the Air Filter Life system will need to be disabled.



STEP 2

Navigate to the Options section of the Driver Information Center, and select the Info Page Options.



STEP 3

Ensure that the Air Filter Life has a green check mark next to it.



STEP 4

Navigate to the Info section of the Driver Information Center, and scroll down to the Air Filter Life section.

Press the wheel in to select the Menu for the Air Filter Life, and select Disable.



STEP 5

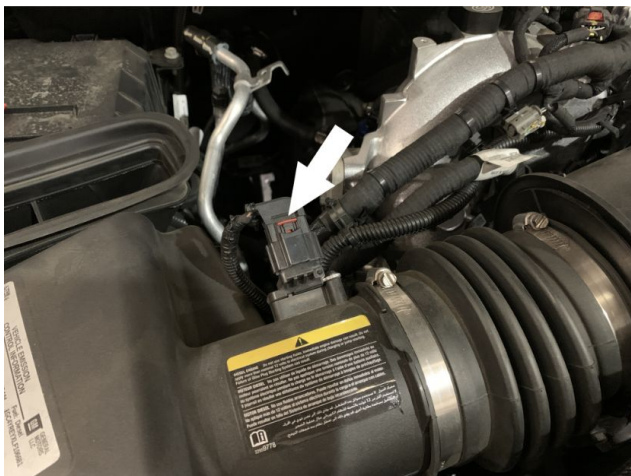
The screen should now display "Disabled", as shown.

You can now move forward with the instructions to finish the installation of your new Cold Air Intake Kit.



STEP 7

Pull out and push down on the red locking tab to disconnect the MAF sensor harness from the MAF sensor.



STEP 6

With the ignition switched off and the parking brake set, disconnect the negative battery cables on both the driver and passenger side batteries. The batteries must be disconnected for at least 2 hours to ensure the proper functionality of the kit during use.

IMPORTANT: Failure to disconnect the battery for a minimum of 2 hours may cause the Check Engine Light to illuminate upon completion of the installation or subsequent operation. **DO NOT SKIP THIS STEP!**

Tools Required: Socket Wrench, 8mm Socket



STEP 8

Remove the indicated screw securing the intake tube and resonator to the vehicle. **Tools Required:** Socket Wrench, 13mm Socket.



STEP 9

Loosen the hose clamps connecting the intake tube to the airbox and plastic turbo adapter. Then remove the intake tube from the vehicle. **Tools Required:** Socket Wrench, 8mm Socket.



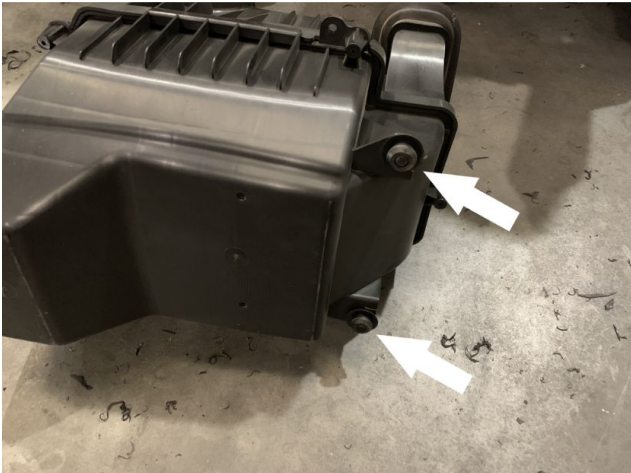
STEP 10

Remove the indicated nut connecting the airbox to the fender of the vehicle. Then lift the airbox out of the vehicle, unseating the prongs on the bottom of the airbox from the grommets which hold it in place. We will be reusing the removed nut in a later step. **Tools Required:** Socket Wrench, 10mm Socket.

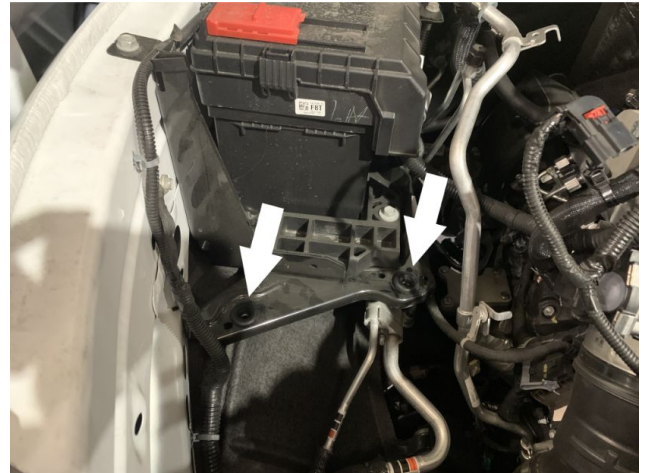


STEP 11

If the grommets are pulled out of the vehicle with the removal of the airbox, pull them off of the airbox prongs and reinsert them into their holes in the engine bay.



STEP 11A



STEP 12

Prepare the S&B CAI for installation by installing the box plug (M), hood scoop seal (C), tube seal (E), and front inlet seal (B) onto the box. Press the provided grommet (O) into the hole on the fender-facing side of the airbox, and place the shoulder washer (P) into the hole on the grommet securely. You may choose to omit the installation of the box plug for increased airflow.



STEP 14

Adjust the position of front air inlet so that it is securely inserted and sealed by the front inlet tube seal on the side of the S&B CAI.



STEP 13

Install the S&B airbox into the vehicle, verifying that the threaded stem shown travels through the shoulder washer installed on the last step. Replace the nut removed in step 5 to secure the airbox to the vehicle.

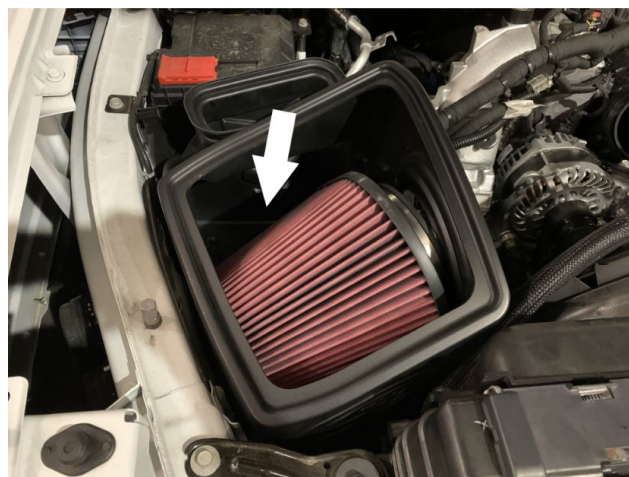
Note: While placing the CAI into the vehicle, ensure that the front inlet intake tube is out of the way by gently pushing it to the side so that the S&B airbox can move by it.

Tools Required: Socket Wrench, 10mm Socket



STEP 15

Ensure that the #104 hose clamp (G) is loosely attached around the flange of the air filter and place the air filter (D) into the airbox through the top opening. Make sure that the end of the filter opposite of the flange is pointed toward the rear of the vehicle.



STEP 16

Prepare the S&B intake tube (I) for installation by attaching the provided coupler (F) using the #54 hose clamp (H) provided. Loosely tighten the other #54 hose clamp to the other end of the coupler.

Tools Required: Socket Wrench, 5/16" Socket.



STEP 17

Remove the MAF sensor from the stock intake air box. Tools Required: T20 Torx



STEP 18

Attach the MAF sensor to the S&B intake tube using the provided MAF gasket, MAF adapter pad philips head screws. The MAF gasket should be contacting the tube with the adapter, pad followed by the MAF sensor, sitting on top of it.

Tools Required: Philip's Head Screwdriver



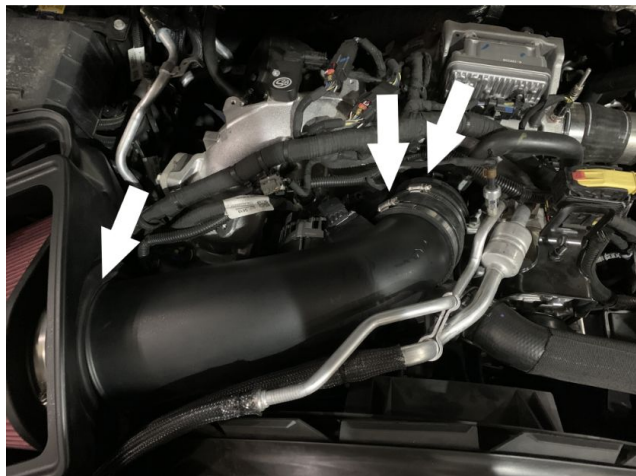
STEP 19

Install the S&B intake tube into the vehicle by guiding the large end of the tube through the tube seal found on the box and into the flange of the air filter. Through this motion, the tube should be oriented so that the end with the coupler attached to it is pointed toward the rear of the vehicle and above the plastic turbo adapter piece. Once you have verified that the intake tube is securely inserted into the filter flange, rotate the intake tube down and away from you, pulling back on the coupler so that it slips around the turbo adapter piece.



STEP 20

Verify that the tube seal completely seals around the complete circumference of the intake tube and then tighten the two #54 hose clamps found around the coupler. **Tools Required:** Socket Wrench, 5/16" Socket



STEP 21

Rotate the filter around the end of the intake tube into the position shown so that it does not contact any walls of the airbox and then tighten the #104 hose clamp located around its flange. **Tools Required:** Socket Wrench, 5/16" Socket



STEP 22

Attach the MAF harness to the MAF sensor by pressing forward on the red locking tab.



STEP 23

Install the lid seal (N) onto the lid (Q) by stretching it around the perimeter of the lid. Snap the lid onto the top of the airbox by pressing down on all of the edges, ensuring that the edge of the lid is securely and completely snapped into place.



STEP 24

After having waited for at least 2 hours, reconnect the battery cables that were disconnected in Step 1.



STEP 25

Inspect your installation, make sure the kit is properly positioned and all fasteners are secured. S&B Filter recommends keeping all stock parts in case you would ever need to reinstall the stock intake. Affix the ID label near the intake kit. The installation is now complete.

